

An Overhead View of the Jessamine Creek Gorge Area

Data obtained from the Kentucky Geological Survey, Kentucky Geoportal, KyFromAbove, and the National Land Cover Database (NLCD)

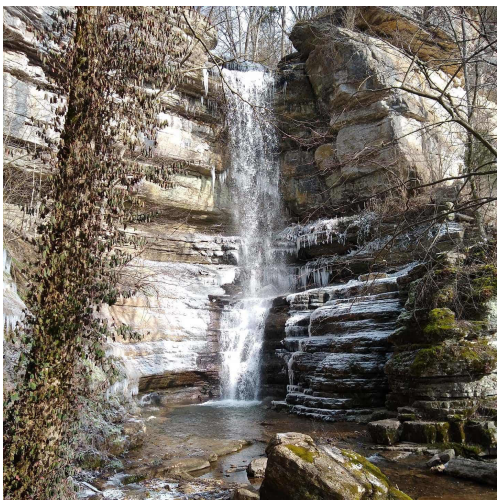
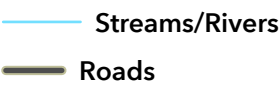
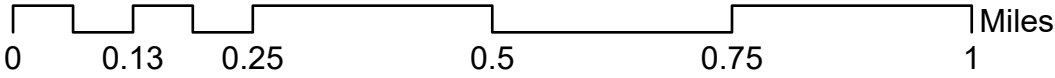
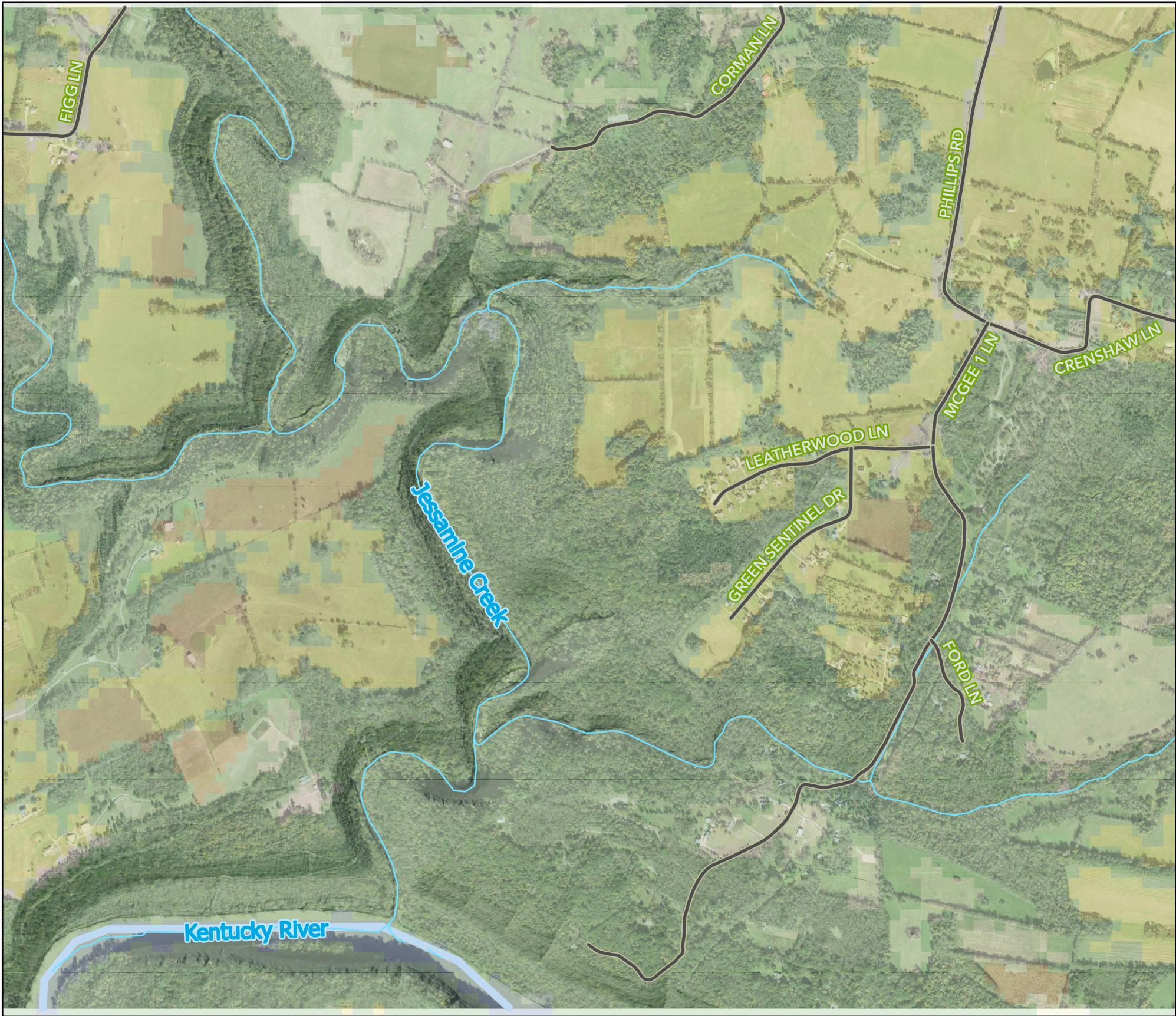


Image: Jessamine Falls
in January 2020.
Taken by Jacob Bame

Jacob Bame
Boyd Shearer
GEO409: Advanced GIS
Spring 2020